

Property:

Units 2001-2 on 20/F, 100 Queen's Road Central

Area:

5,001 sq. ft. Gross (approx.)

Monthly Rental:

HK\$77 psf (Gross)

Monthly Air-Conditioning & Management Fee:

HK\$7 psf

Monthly Government Rates:

HK\$11,000

Availability:

Immediate

Features:

- Prime Central Office
- Raised floor system : 150mm
- Ceiling Height : 2.8m (approx.)
- Carparking facilities
- Fitted with Board Room and Director's Office
- Direct lift lobby
- Chilled water supply for Server Room



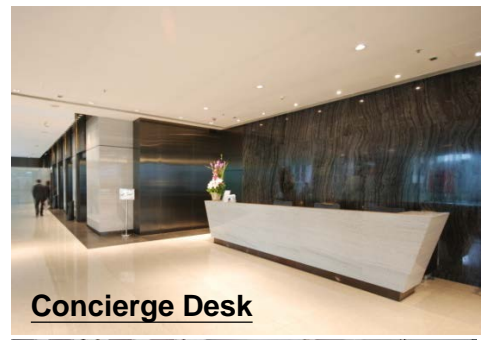




Executive Toilet



View

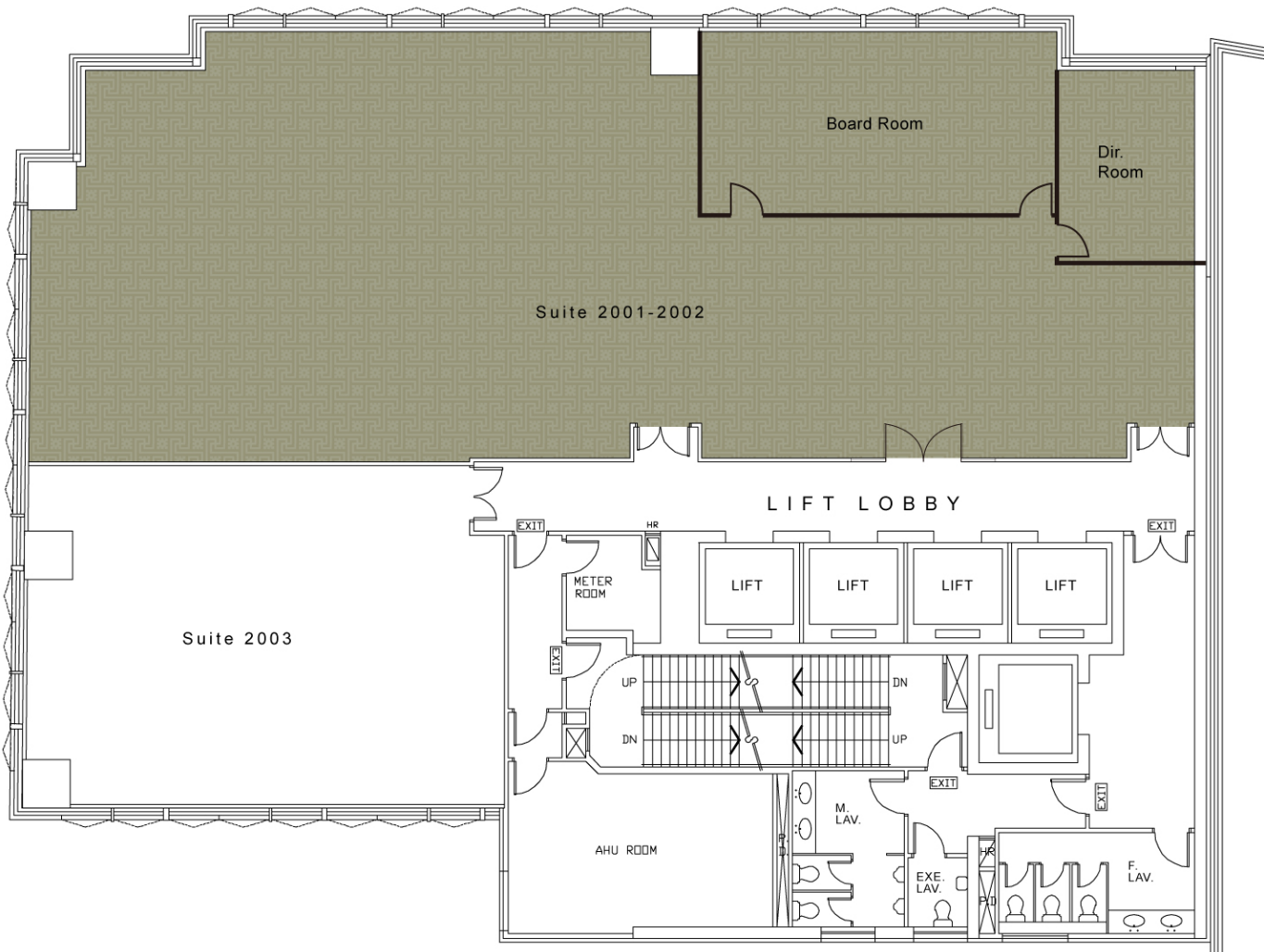


Concierge Desk



Carpark

FLOOR PLAN



Not to scale
For identification purpose only